

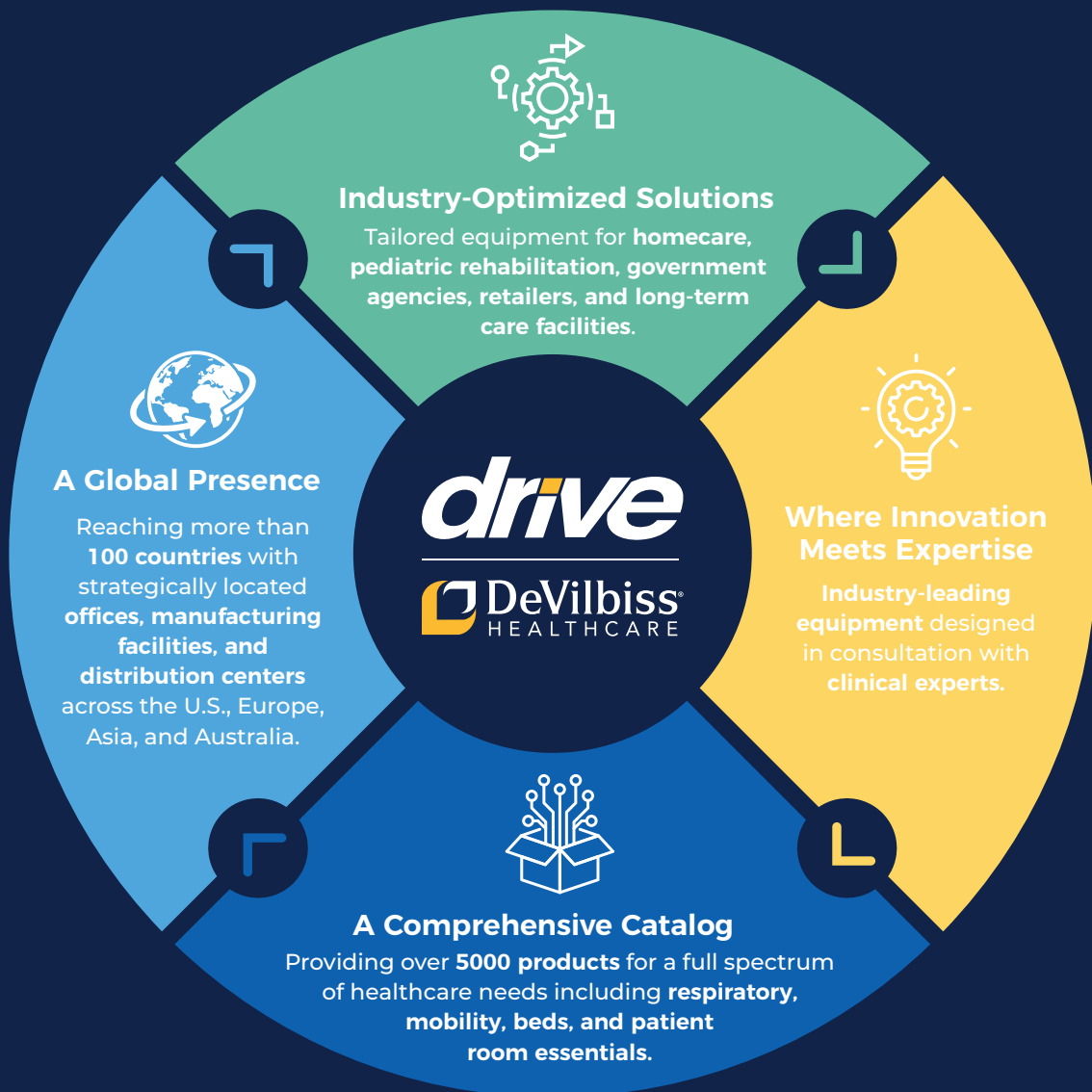
# Drive is

## So Much More Than Just DME

Visit Us at Booth #641

March 27 - 28, 2024 | Promo Code - MEDTRADE24

For over a century, we've been quietly **revolutionizing the medical equipment industry**.  
Now we're ready for the world to witness the **full scope of our evolution**.



# Table of Contents

CATEGORY	PAGE(S)
Respiratory _____	1-3
Beds _____	4
Pressure _____	5-6
Patient Room _____	6-8
Bath Safety _____	8-9
Commodes _____	9-10
Power _____	10-11
Transport Chairs & Wheelchairs _____	12-16
Rollators _____	16-17
Walkers _____	17-19
Canes & Crutches _____	19-21
Personal Care _____	22-23
Inspired Pediatric Rehab _____	23-24

**\$449<sup>00</sup>**  
EACH



**5 Liter Compact Concentrator**  
Item #525DS

AS LOW AS...  
**\$1,049<sup>00</sup>**  
EACH



**iGo2™ Portable Oxygen Concentrator (POC)**  
Item #125D, iGo2 POC, \$1,049.00  
Item #125D-XB, with Extra Battery, \$1,099.00

AS LOW AS...  
**\$1,099<sup>00</sup>**  
EACH



**iGo2™ Portable Oxygen Concentrator (POC) with Bluetooth Connectivity**  
Item #125D-BT, iGo2 POC with Bluetooth Connectivity, \$1,099.00  
Item #125D-BT-XB, with Extra Battery, \$1,149.00

**\$15<sup>00</sup>**  
EACH



**Power Neb Ultra Nebulizer**  
Item #18080, with Disposable Neb Kit

**\$177<sup>00</sup>**  
EACH



**PULMONEB® LT Compressor Nebulizer System**  
Item #3655LTR, with Disposable and Reusable Neb Kit

**\$29<sup>00</sup>**  
EACH



**DEVILBISS TRAVELER® Portable Compressor Nebulizer System**  
Item #6910D-DR, without Battery Pack

**\$21<sup>94</sup>**  
EACH



**Penguin Pediatric Compressor Nebulizer**  
Item #MQ6006, with Disposable Neb Kit, without Carry Bag

**\$21<sup>92</sup>**  
EACH



**Fish Pediatric Compressor Nebulizer**  
Item #18091-FS, with Disposable & Reusable Neb Kit and Carry Bag

**\$13<sup>99</sup>**  
EACH



**Universal Nebulizer Shoulder Carry Bag**  
Item #18031

**\$6<sup>99</sup>**  
EACH



**Oxygen Cylinder Shoulder Carry Bag, Horizontal Style**  
Item #OP-150T

**\$219<sup>00</sup>**  
EACH



**VACU-AIDE® Suction Machine**  
Item #7325P-D, with battery, disposable container with internal filter and carry bag  
Item #7325P-D-EXF, with battery, disposable container with external filter and carry bag

AS LOW AS...  
**\$0.<sup>79</sup>**  
EACH



**Suction Tubing**  
Item #SUCP TUBING 10, 10", \$0.79/ea  
Item #SUCP TUBING 72, 72", \$2.25/ea

**\$106<sup>62</sup>**  
EACH



**Integrated OM-812 Bonsai® Velocity Conservor**  
Item #INT-812M6

**\$9<sup>00</sup>**  
EACH



**Drive Regulators Elongated, 0-15 LPM, CGA870, DISS**  
Item #18302GDEL

**\$49<sup>58</sup>**  
EACH



**Brass-Core Regulator 0-25 LPM, CGA870, Barb, 0 PTO**  
Item #IN3625-R

**\$8<sup>29</sup>**  
EACH



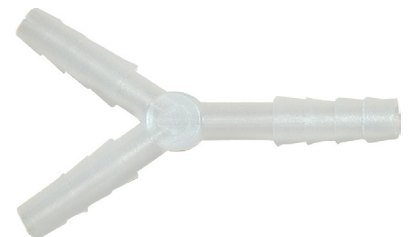
**Fingertip Pulse Oximeter**  
Item #MQ3000

**\$9<sup>92</sup>**  
EACH



**View SpO2 Deluxe Pulse Oximeter**  
Item #MQ3200

**\$5<sup>85</sup>**  
BOX  
Sold 10/pkg



**Tubing Extension Connector**  
Item #CON 700

\$63<sup>00</sup>  
CASE  
Sold 50/cs



**Humidifier Bottle**  
Item #HUM 001

\$33<sup>02</sup>  
CASE  
Sold 50/cs



**Pediatric Oxygen Mask with 7' Tubing**  
Item #MASK 003P

AS LOW AS...  
\$24<sup>98</sup>  
CASE  
Sold 50/cs



**Tracheotomy Mask**  
Item #MASK 007A, Adult, \$29.98/cs  
Item #MASK 007P, Pediatric \$24.98/cs

\$19<sup>99</sup>  
CASE  
Sold 50/cs



**Extra Soft Cozy Cannula**  
Item #SOFT 200, Adult  
Item #SOFT 207 P, Pediatric, 7' tubing

AS LOW AS...  
\$21<sup>99</sup>  
CASE  
Sold 50/cs



**No-kink Oxygen Tubing**  
Item #TUB NK 07, 7', \$21.99/cs  
Item #TUB NK 14, 14', \$24.99/cs


\$1<sup>25</sup>  
EACH



**Economy CPAP Tubing**  
Item #CPAPTUB6-90, 6' Long CPAP Tubing



AS LOW AS...  
**\$30872**  
EACH



*\*15030BV-HR shown*

**DELTA® Ultra- Light 1000, Semi-Electric Bed**  
Item #15030, \$308.72  
Item #15030BV-FR, with Full Rails, \$361.76  
Item #15030BV-HR, with Half Rails, \$357.26

AS LOW AS...  
**\$36588**  
EACH



*\*15033 shown*

**DELTA® Ultra- Light 1000, Full-Electric Bed**  
Item #15033, \$365.88  
Item #15033BV-FR, with Full Rails, \$455.54  
Item #15033BV-HR, with Half Rails, \$450.69

AS LOW AS...  
**\$23285**  
EACH



*\*15561HR shown*

**COMPETITOR® II Manual Height Adjustable Bed**  
Item #15561, \$232.85  
Item #15561FR, Full Rails, \$262.76  
Item #15561HR, Half Rails, \$268.15

AS LOW AS...  
**\$24659**  
EACH



*\*15571HR shown*

**COMPETITOR® II Semi Electric Height Adjustable Bed**  
Item #15571, \$246.59  
Item #15571FR, Full Rails, \$276.50  
Item #15571HR, Half Rails, \$281.89

AS LOW AS...  
**\$75085**  
EACH



*\*15300LW shown*

**Lightweight Bariatric Homecare Bed**  
Item #15300LW, 42" (W) x 80 (L), \$750.85/ea  
Item #15302LW, 48" (W) x 80 (L), \$934.55/ea  
Item #15303LW, 54" (W) x 80 (L), \$1,677.31/ea

**\$2,981<sup>49</sup>**  
EACH



**Prime Plus Bed Model P2002**  
Item #P2002, 1,000 lb Weight Capacity

**\$31<sup>12</sup>**  
EACH



**Bedding in a Box**  
Fits 36" (W) x 80" (L) x 5" - 6" (H)  
Item #15030HBC

**\$1584**  
EACH



**Hospital Bed Linen Kit**  
Fits 36" (W) x 80" (L) x 5" - 6" (H)  
Item #15030HBL

**\$1930**  
BOX  
Sold 2/bx



**Fitted Sheets Extended**  
Fits 36" (W) x 84" (L) x 8" (H)  
Item #15030HBL-3684

**\$100<sup>80</sup>**  
EACH



**Therapeutic 5 Zone Mattress**  
36" (W) x 80" (L)  
Item #15019

**\$21<sup>85</sup>**  
EACH



**MED-AIRE™ Alternating Pressure Pump and Pad System,**  
36" (W) x 78" (L)  
Item #14002E, Fixed Pressure

**\$259<sup>55</sup>**  
EACH



**MED-AIRE™ 8" Alternating Pressure and Low Air Loss Mattress System**  
36" (W) x 80" (L) x 8"(H)  
Item #14027

**\$913<sup>84</sup>**  
EACH



**MED-AIRE™ Plus 10" Bariatric Alternating Pressure and Low Air Loss Mattress Replacement System**  
60" (W) x 80" (L) x 10"(H)  
Item #14060

**\$1,658<sup>68</sup>**  
EACH



**HARMONY™ True Low Air Loss Tri-Therapy Mattress Replacement System**  
42" (W) x 80" (L) x 10"(H)  
Item #14200N-42

**\$1,830<sup>19</sup>**  
EACH



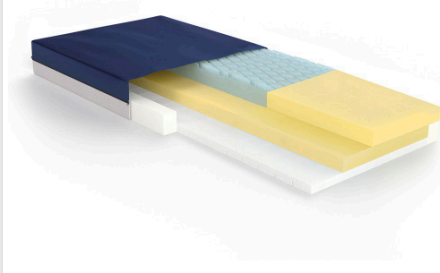
**PRESERVETECH® Lateral Rotation System with On Demand Low Air Loss**  
Item #LS9500N

**\$111<sup>80</sup>**  
EACH



**QUICK 'N EASY COMFORT™ Mattress**  
36" (W) x 80" (L) x 6"(H)  
Item #15076

**\$129<sup>34</sup>**  
EACH



**GRAVITY™ 7 Long Term Care Pressure Redistribution Mattress**  
36" (W) x 80" (L) x 6"(H)  
Item #15770

**\$54<sup>59</sup>**  
EACH



**PRIMEMAT™ 2.0 Impact Reduction Fall Mats**  
24" (W) x 72" (L)  
Item #PM20BA, Brown  
Item #PM20GA, Gray

**\$40<sup>03</sup>**  
EACH



**Lumbar Support General Use Wheelchair Back Cushion**  
22" (W) x 19" (L)  
Item #8033

AS LOW AS...  
**\$13<sup>95</sup>**  
EACH



**GEL-U-SEAT™ Lite General Use 2" Gel/Foam Wheelchair Cushion**  
Item #8040-1, 16" (W) x 16" (L) x 2" (H), \$13.95/ea  
Item #8040-2, 18" (W) x 16" (L) x 2" (H), \$14.17/ea  
Item #8040-3, 20" (W) x 16" (L) x 2" (H), \$16.06/ea  
Item #8040-7, 22" (W) x 18" (L) x 2" (H), \$22.61/ea

AS LOW AS...  
**\$18<sup>00</sup>**  
EACH



**Gel-U-Seat™ Skin Protection 3" Gel/Foam Wheelchair Cushion**  
Item #8046-1, 16" (W) x 16" (L) x 3" (H), \$18.00/ea  
Item #8046-2, 18" (W) x 16" (L) x 3" (H), \$19.25/ea  
Item #8046-3, 20" (W) x 16" (L) x 3" (H), \$19.23/ea  
Item #8046-5, 22" (W) x 18" (L) x 3" (H), \$27.48/ea

AS LOW AS...  
**\$117<sup>62</sup>**  
EACH



**BALANCED AIRE™ Adjustable Skin Protection Cushion**  
Item #8047-16-2, 16" (W) x 16" (L) x 2" (H), \$117.62/ea  
Item #8047-18-2, 18" (W) x 16" (L) x 2" (H), \$123.14/ea  
Item #8047-20-2, 20" (W) x 16" (L) x 2" (H), \$138.01/ea

**\$1,120<sup>33</sup>**  
EACH



**ROSE COMFORT MAX™ Tilt and Recline Chair with Casters**  
Item #CLN400-20

**\$301<sup>59</sup>**  
EACH



Available Colors



\*Shown in Charcoal

**3-Position Recliner**  
Item #D574-CHAR, Charcoal  
Item #D574-CHOC, Chocolate  
Item #D574-TAN, Tan

**\$413<sup>15</sup>**  
EACH



Available Colors



\*Shown in Tan

**3-Position Recliner, Bariatric**  
Item #D574EW-CHAR, Charcoal  
Item #D574EW-CHOC, Chocolate  
Item #D574EW-TAN, Tan





**\$398<sup>47</sup>**  
EACH

Available Colors

\*Shown in Chocolate

**4-Position Clinical Care Recliner**

Item #D577-CHAR, Charcoal  
Item #D577-CHOC, Chocolate  
Item #D577-TAN, Tan



**\$63<sup>68</sup>**  
EACH

**Pivot & Tilt Overbed Table**

Item #13000



**\$48<sup>26</sup>**  
EACH

**Non-Tilt Overbed Table with Chrome Base**

Item #13003



**\$48<sup>67</sup>**  
EACH

**Hamper Stand**

Item #13070



**\$873<sup>24</sup>**  
EACH

**GRAVIST™ Floor Lift, Manual Base, 600 lb Weight Capacity**

Item #FLNP600



**\$1,172<sup>93</sup>**  
EACH

**LEVANTAR™ Floor Lift, Power Base, 500 lb Weight Capacity**

Item #FLP500



**\$1,215<sup>74</sup>**  
EACH

**GRAVIST™ Floor Lift, Power Base, 600 lb Weight Capacity**

Item #FLP600



**\$1,240<sup>05</sup>**  
EACH

**Sit To Stand Lift**

Item #STSP450



AS LOW AS...  
**\$2849**  
EACH



\*13223L Shown

**Full Body Slings**

Item #13223L, Large, Mesh, \$28.49/ea  
Item #13223M, Medium, Mesh, \$28.49/ea  
Item #13224XL, Extra-Large, Solid, \$35.12/ea

**\$3810**  
EACH



**Divided Leg Sling**

Item #13262L, Large  
Item #13262M, Medium

**\$1682**  
EACH



**Stand-up / Transport Sling**

Item # 13264A

**\$2237**  
EACH



**PRESERVETECH® AQUACHAIR™**  
Transfer Accessory with Curtain  
Guard Protection

Item #RTL12A004-TR

**\$17583**  
EACH



**PRESERVETECH® AQUACHAIR™**  
Bathing System with Bidet

Item #RTL12A004-WH

**\$6343**  
CASE  
Sold 4/cs



**Deluxe Aluminum Shower Bench**  
without Back

Item #12203KD-4

**\$3603**  
EACH



**Shower Chair with Folding Back**

Item #RTL12606

**\$3722**  
EACH



**Deluxe Bariatric Shower Chair with**  
Cross-Frame Brace

Item #12021KD-1

**\$6886**  
CASE  
Sold 2/cs



**Transfer Tub Bench**

Item #12011KD-2

**\$56<sup>97</sup>**  
EACH



**Bariatric Transfer Bench**  
Item #12025KD-1

**\$93<sup>93</sup>**  
EACH



**Folding Universal Sliding Transfer Bench**  
Item #RTL12075

**\$69<sup>22</sup>**  
EACH



**PRESERVETECH® Raised Toilet Seat with Bidet**  
Item #RTL12C005-WH

AS LOW AS...  
**\$18<sup>71</sup>**  
EACH



**Hinged Toilet Seat Riser**  
Item #RTL12607, Regular Seat, \$18.71/ea  
Item #RTL12608, Elongated Seat, \$23.35/ea

AS LOW AS...  
**\$8<sup>09</sup>**  
EACH



**White Powder-Coated Grab Bar**  
Item #RTL12012, 12", \$8.09/ea  
Item #12016-3, 16", \$25.40/cs, 3/cs  
Item #12024-3, 24", \$33.09/cs, 3/cs

**\$7<sup>52</sup>**  
EACH



**Suction Cup Grab Bars**  
Item #RTL13083

**\$75<sup>19</sup>**  
CASE  
Sold 4/cs



**Competitive Edge Line 3-in-1 Folding Commode**  
Item #11148CE-4

**\$88<sup>24</sup>**  
CASE  
Sold 4/cs



**Folding Steel Commode**  
Item #11148N-4

**\$117<sup>70</sup>**  
CASE  
Sold 2/cs



**Steel Drop-Arm Commode with Wheels and Padded Armrests**  
Item #11101W-2

\$6971  
EACH



Drop Arm Steel Commode  
Item #11125PSKD-1

\$6025  
EACH



Bariatric Folding Commode  
Item #11117N-1

\$452  
BOX  
Sold 7 liners/bx



Super Absorbent Commode Pail  
Liners  
Item #RTL12095

\$35014  
EACH



Aluminum Rehab Shower Commode  
Chair  
Item #NRS185006

\$33003  
EACH



Aluminum Rehab Shower Commode  
Chair with Four Rear-locking Casters  
Item #NRS185007

\$39299  
EACH



Bariatric Aluminum Rehab Shower  
Commode Chair  
Item #NRS185008

\$51542  
EACH



SCOUT™ 3-Wheel Scooter,  
Red/Blue Shrouds  
Item #SFSCOUT3

\$62053  
EACH



SCOUT™ LT 4-Wheel Scooter,  
Red/Blue Shrouds  
Item #SCOUTLT4

\$65123  
EACH



SCOUT™ LT 4-Wheel Scooter,  
20AH Battery, Red/Blue Shrouds  
Item #SCOUTLT4-EXT

**\$941<sup>58</sup>**  
EACH



**PHOENIX™ LT 4-Wheel Scooter,  
18" Seat, Red/Blue/Gray Shrouds**  
Item #PHOENIXLT4

**\$1,016<sup>58</sup>**  
EACH



**PHOENIX™ LT 4-Wheel Scooter,  
20" Seat, Red/Blue/Gray Shrouds**  
Item #PHOENIXLT4-20

**\$1,610<sup>37</sup>**  
EACH



**ZOOM™ Auto-Flex Folding Travel  
Scooter**  
Item #FLEX-AUTO

**\$3,054<sup>57</sup>**  
EACH



**COBRA™ GT4 Scooter,  
22" Captain Seat**  
Item #COBRAGT422CS

**\$568<sup>48</sup>**  
EACH



**ZOOM™ 3-Wheel Recreational  
Scooter**  
Item #ZOOM3

**\$13<sup>07</sup>**  
EACH



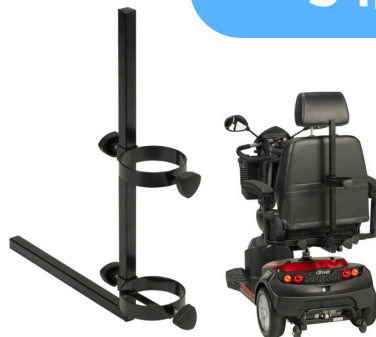
**Armrest Bag**  
Item #AB1000

**\$17<sup>97</sup>**  
EACH



**Cup Holder**  
Item #AZ0060

**\$54<sup>98</sup>**  
EACH



**Oxygen Holder Set, L Type**  
Item #SF8010

**\$61<sup>37</sup>**  
EACH



**Rear Basket Set, L Type**  
Item #SF8020

AS LOW AS...  
**\$96<sup>63</sup>**  
EACH



**Aluminum Transport Chair**

Item #ATC17-RD, 17" Seat, Red, \$96.63/ea  
Item #ATC19-BL, 19" Seat, Blue, \$102.76/ea  
Item #ATC19-RD, 19" Seat, Red, \$102.76/ea

**\$276<sup>46</sup>**  
EACH



**22" Bariatric Aluminum Transport Chair**

Item #ATC22-R

**\$170<sup>56</sup>**  
EACH



**Bariatric Steel Transport Chair**

Item #BTR22-B, Blue  
Item #BTR22-R, Red

**\$112<sup>49</sup>**  
EACH



**FLY-LITE™ Aluminum Transport Chair**

Item #DFLI9-RD, 19"

**\$90<sup>64</sup>**  
EACH



**Deluxe Fly-Weight Aluminum Transport Chair with Removable Casters**

Item #RTLFW19RW-RD, 19"

**\$125<sup>33</sup>**  
EACH



**Super Light, Folding Transport Chair with Carry Bag and Flip-Back Arms**

Item #SL18, 18"

**\$207<sup>33</sup>**  
EACH



**POLY-FLY™ High Strength, Lightweight Wheelchair/Flyweight Transport Chair Combo**

Item #TR18, 18"



## SILVER SPORT™ 2 Wheelchair

AS LOW AS...  
**\$99<sup>00</sup>**  
EACH



Item #	Description	Price
SSP216DDA-ELR	16" Detachable Desk Arm, Elevating Legrests	\$112.38/ea
SSP216DDA-SF	16" Detachable Desk Arm, Swing-away Footrests	\$104.95/ea
SSP216DFA-ELR	16" Detachable Full Arm, Elevating Legrests	\$112.38/ea
SSP216DFA-SF	16" Detachable Full Arm, Swing-away Footrests	\$104.95/ea
SSP218DDA-ELR	18" Detachable Desk Arm, Elevating Legrests	\$112.38/ea
SSP218DDA-SF	18" Detachable Desk Arm, Swing-away Footrests	\$104.95/ea
SSP218DFA-ELR	18" Detachable Full Arm, Elevating Legrests	\$112.38/ea
SSP218DFA-SF	18" Detachable Full Arm, Swing-away Footrests	\$104.95/ea
SSP218FA-ELR	18" Full Arm, Elevating Legrests	\$99.00/ea
SSP218FA-SF	18" Full Arm, Swing-away Footrests	\$99.00/ea
SSP220DDA-ELR	20" Detachable Desk Arm, Elevating Legrests	\$118.78/ea
SSP220DDA-SF	20" Detachable Desk Arm, Swing-away Footrests	\$110.08/ea
SSP220DFA-ELR	20" Detachable Full Arm, Elevating Legrests	\$118.78/ea
SSP220DFA-SF	20" Detachable Full Arm, Swing-away Footrests	\$110.08/ea

## CRUISER™ III Wheelchair

AS LOW AS...  
**\$114<sup>50</sup>**  
EACH



Item #	Description	Price
K316ADFA-ELR	16" Flip-Back, Adjustable, Det. Full Arm, Elevating Legrests	\$114.50/ea
K316DDA-ELR	16" Flip-Back, Det. Desk Arm, Elevating Legrests	\$125.00/ea
K316DDA-SF	16" Flip-Back, Det. Desk Arm, Swing-away Footrests	\$119.00/ea
K316DFA-SF	18" Flip-Back, Det. Full Arm, Swing-away Footrests	\$114.50/ea
K318DDA-ELR	18" Flip-Back, Det. Desk Arm, Elevating Legrests	\$125.00/ea
K318DDA-SF	18" Flip-Back, Det. Desk Arm, Swing-away Footrests	\$119.00/ea
K318DFA-ELR	18" Flip-Back, Det. Full Arm, Elevating Legrests	\$125.00/ea
K320DDA-ELR	20" Flip-Back, Det. Desk Arm, Elevating Legrests	\$125.00/ea
K320DDA-SF	20" Flip-Back, Det. Desk Arm, Swing-away Footrests	\$122.50/ea
K320DFA-ELR	20" Flip-Back, Det. Full Arm, Elevating Legrests	\$122.50/ea

## CRUISER™ X4 Wheelchair

AS LOW AS...  
**\$139<sup>00</sup>**  
EACH



Item #	Description	Price
CX416ADDA-ELR	16" Adjustable Desk Arm, Elevating Legrests	\$145.00/ea
CX416ADDA-SF	16" Adjustable Desk Arm, Swing-away Footrests	\$139.00/ea
CX416ADFA-SF	16" Adjustable Full Arm, Swing-away Footrests	\$139.00/ea
CX418ADDA-ELR	18" Adjustable Desk Arm, Elevating Legrests	\$145.00/ea
CX418ADDA-SF	18" Adjustable Desk Arm, Swing-away Footrests	\$139.00/ea
CX418ADFA-ELR	18" Adjustable Full Arm, Elevating Legrests	\$145.00/ea
CX418ADFA-SF	18" Adjustable Full Arm, Swing-away Footrests	\$139.00/ea
CX420ADDA-ELR	20" Adjustable Desk Arm, Elevating Legrests	\$149.00/ea
CX420ADDA-SF	20" Adjustable Desk Arm, Swing-away Footrests	\$144.00/ea
CX420ADFA-ELR	20" Adjustable Full Arm, Elevating Legrests	\$149.00/ea
CX420ADFA-SF	20" Adjustable Full Arm, Swing-away Footrests	\$144.00/ea

## VIPER™ Plus GT Wheelchair with Universal Armrests

AS LOW AS...  
**\$269<sup>00</sup>**  
EACH



Item #	Description	Price
PLA416FBUARAD-ELR	16" Flip-Back, Univ. Arm, Elevating Legrests	\$275.00/ea
PLA416FBUARAD-SF	16" Flip-Back, Univ. Arm, Swing-away Footrests	\$269.00/ea
PLA418FBUARAD-ELR	18" Flip-Back, Univ. Arm, Elevating Legrests	\$275.00/ea
PLA418FBUARAD-SF	18" Flip-Back, Univ. Arm, Swing-away Footrests	\$269.00/ea
PLA420FBUARAD-ELR	20" Flip-Back, Univ. Arm, Elevating Legrests	\$275.00/ea
PLA420FBUARAD-SF	20" Flip-Back, Univ. Arm, Swing-away Footrests	\$269.00/ea
PLA422FBUARAD-ELR	22" Flip-Back, Univ. Arm, Elevating Legrests	\$275.00/ea
PLA422FBUARAD-SF	22" Flip-Back, Univ. Arm, Swing-away Footrests	\$269.00/ea

## Bariatric SENTRA™ EC Heavy-Duty Wheelchair

AS LOW AS...  
**\$218<sup>22</sup>**  
EACH



Item #	Description	Price
STD20ECDDAHD-ELR	20" HD, Detachable Desk Arm, Elevating Legrests	\$234.16/ea
STD20ECDDAHD-SF	20" HD, Detachable Desk Arm, Swing-away Footrests	\$218.22/ea
STD20ECDFAHDA-ELR	20" HD, Detachable Full Arm, Elevating Legrests	\$234.16/ea
STD20ECDFAHDA-SF	20" HD, Detachable Full Arm, Swing-away Footrests	\$218.22/ea
STD22ECDDA-ELR	22" Detachable Desk Arm, Elevating Legrests	\$242.79/ea
STD22ECDDA-SF	20" Detachable Desk Arm, Swing-away Footrests	\$228.00/ea
STD22ECDFDA-ELR	22" Detachable Full Arm, Elevating Legrests	\$242.79/ea
STD22ECDFDA-SF	22" Detachable Full Arm, Swing-away Footrests	\$228.00/ea
STD24ECDDA-ELR	24" Detachable Desk Arm, Elevating Legrests	\$247.98/ea
STD24ECDDA-SF	24" Detachable Desk Arm, Swing-away Footrests	\$234.71/ea
STD24ECDFDA-ELR	24" Detachable Full Arm, Elevating Legrests	\$247.98/ea
STD24ECDFDA-SF	24" Detachable Full Arm, Swing-away Footrests	\$234.71/ea

## Bariatric SENTRA™ EC Heavy-Duty, Extra-Extra-Wide Wheelchair

AS LOW AS...  
**\$394<sup>23</sup>**  
EACH



Item #	Description	Price
STD26ECDDA	26" Detachable Desk Arm	\$394.23/ea
STD26ECDFDA	26" Detachable Full Arm	\$394.23/ea
STD28ECDDA	28" Detachable Desk Arm	\$394.23/ea
STD28ECDFDA	28" Detachable Full Arm	\$394.23/ea
STD30ECDDA	30" Detachable Desk Arm	\$436.40/ea
STD30ECDFDA	30" Detachable Full Arm	\$436.40/ea



**VIPER™ Plus Reclining Wheelchair**

**\$360<sup>89</sup>**  
EACH



Item #	Description
PLA416RBDDA	16" Flip Back Removable Desk Arm
PLA416RBDFA	16" Flip Back Removable Full Arm
PLA418RBDDA	18" Flip Back Removable Desk Arm
PLA418RBDFA	18" Flip Back Removable Full Arm
PLA420RBDDA	20" Flip Back Removable Desk Arm
PLA420RBDFA	20" Flip Back Removable Full Arm



**\$175<sup>00</sup>**  
EACH

**SILVER SPORT™ Recliner with Vinyl Upholstery**

Item #SSP16RBDFAV, 16", Full Arm  
Item #SSP18RBDFAV, 18", Full Arm  
Item #SSP20RBDFAV, 20", Full Arm



**\$3<sup>93</sup>**  
EACH

**Universal Cup Holder**

Item #STDS1040S



AS LOW AS...  
**\$64<sup>39</sup>**  
EACH

**Wheelchair/Scooter Ramps**

Item #STDS1093, 2' with Carry Case, \$64.39  
Item #STDS1097, 6' with Carry Case, \$118.69



**\$3<sup>01</sup>**  
EACH

**Wheel Lock Extensions**

Item #STDS601



**\$22<sup>27</sup>**  
BOX  
Sold 1pr/bx

**Anti-Tippers for 26", 28" 30" Wheelchairs**

Item #STDS829



**\$5<sup>08</sup>**  
EACH

**Seat Belt, Hook and Loop Closure**

Item #STDS856

**NITRO® SPRINT™ Rollator**

**\$1650<sup>00</sup>**  
EACH



Item #	Description
102662BK	Black
102662BK-H	Black, Hemi
102662BK-T	Black, Tall
102662BL	Blue
102662BL-H	Blue, Hemi
102662BL-T	Blue, Tall
102662RD	Red
102662RD-H	Red, Hemi
102662RD-T	Red, Tall

**\$700**  
EACH



**NITRO® SPRINT™ Cane Holder**  
Item #102662-CANE

**\$700**  
EACH



**NITRO® SPRINT™ Cell Phone Holder**  
Item #102662-CELL

**\$700**  
EACH



**NITRO® SPRINT™ Cup Holder**  
Item #102662-CUP

**\$1279**  
EACH



**NITRO® SPRINT™ Rollator Tray**  
Item #102662-TRAY

**\$580**  
EACH



**Aluminum Rollator, 6" Casters**  
Item #R726BK, Black  
Item #R726RD, Red

**\$485<sup>03</sup>**  
EACH



**NITRO® Carbon Fiber Rollator, Black**  
Item #RTL10266CF

\$25827  
EACH



**NITRO® DUET™ Rollator and Transport Chair**  
Item #RTL10266DT

\$12086  
EACH



**DUET™ Rollator/Transport Chair, Blue**  
Item #795B

\$15874  
EACH



**ELEVATE™ Upright Walker**  
Item #UPWKRBLL10, Blue  
Item #UPWKRGY10, Gray

\$4700  
EACH



**Travel Rollator, Black**  
Item #RTL800KD-BK

\$8709  
EACH



**GO-LITE™ Bariatric Steel Rollator**  
Item #10215RD-1

\$7177  
EACH



**Deluxe 3 Wheel Aluminum Rollator, 7.5" Casters**  
Item #10289BL, Flame Blue  
Item #10289RD, Flame Red

\$14032  
EACH



**NITRO® 3-Wheel Rollator**  
Item #RTL10266TWHL

\$5767  
EACH



**WINNIE LITE SUPREME™ / GO LITE™ 3 Wheel Aluminum Rollator**  
Item #RTL199

\$12383  
EACH



**NITRO® GLIDE™ Knee Walker**  
Item #791BL, Blue  
Item #791RD, Red

\$90<sup>99</sup>  
EACH



Steerable Knee Walker  
Item #796

\$74<sup>60</sup>  
CASE  
Sold 4.cs



Folding Walker, Two Button with 5" Wheels  
Item #10244-4, Adult

\$67<sup>68</sup>  
CASE  
Sold 4.cs



Deluxe Folding Walker, Two Button, Adult  
Item #10200-4

\$65<sup>43</sup>  
CASE  
Sold 4.cs



Deluxe, Trigger Release Folding Walker with 5" Wheels  
Item #10226-4

\$72<sup>18</sup>  
EACH



CLEVER-LITE™ LS, Adult Walker  
Item #10233

\$34<sup>96</sup>  
EACH



Two Wheeled Walker with Seat  
Item #1239RD

\$43<sup>14</sup>  
EACH



Deluxe Folding Travel Walker with 5" Wheels  
Item #RTL10263KDR

\$39<sup>13</sup>  
EACH



Bariatric Aluminum Folding Walker, Two Button  
Item #10220-1

\$67<sup>26</sup>  
CASE  
Sold 4/cs



Deluxe, Trigger Release Folding Walker  
Item #10225-4, Youth

**\$71<sup>15</sup>**  
CASE  
Sold 4/cs



**Deluxe, Trigger Release Folding Walker with 5" Wheels**

Item #10227-4, Youth

**\$65<sup>14</sup>**  
CASE  
Sold 4.cs



**Folding Junior Walker, Two Button with 5" Wheels**

Item #10247-4

**\$12<sup>34</sup>**  
EACH



**Universal Walker Tray with Cup Holder**

Item #10124

**\$3<sup>57</sup>**  
PAIR  
Sold 1pr/bx



**Walker Glide Ski**

Item #RTL100017

**\$14<sup>70</sup>**  
EACH



**E-Z WALKER™ Caddy**

Item #RTL10131

**\$8<sup>00</sup>**  
EACH



**Mobility Bags**

Item #RTL10254BFL, Blue Floral

Item #RTL10254GR, Army Green

Item #RTL10254TFL, Tropical Floral

**\$5<sup>00</sup>**  
EACH



**Multi-Use Accessory Bag, Small**

Item #RTL10255PK, Pink

**\$8<sup>00</sup>**  
EACH



**Multi-Use Accessory Bag, Medium**

Item #10220-1, Navy

**\$399<sup>35</sup>**  
CASE



**Cane Rack with Canes & Accessories**

Item #RTL10222CANE

**\$54.69**  
CASE  
Sold 6/cs



**Offset Handle Cane, Black Wave**  
Item #10309BKW-6

**Offset Handle Aluminum Canes,  
Handle Height Adjusts from 30"-39"**



Item #	Description
RTL10303AF	Amber Floral
RTL10303BF	Burst Floral
RTL10303GP	Green Plaid
RTL10303LV	Lavender
RTL10303NA	Navy Argyle
RTL10303NV	Navy
RTL10303PF	Pink Floral
RTL10303PN	Leafy Green Pine
RTL10307	Bronze

**\$5.99**  
EACH

**\$7.10**  
EACH



**Gel Grip, Aluminum Offset Canes,  
Handle Height Adjusts from 30"-39"**  
Item #RTL10372FL, Floral  
Item #RTL10372PL, Plaid

**\$4.96**  
EACH



**Round-Handle Canes with Foam Grip  
Handle Height Adjusts from  
28.75"- 37.75"**  
Item #RTL10342

**\$5.99**  
EACH



**Comfort Grip Cane  
Handle Height Adjusts from 30"-39"**  
Item #RTL10336AN, Anchor  
Item #RTL10336LM, Lemons  
Item #RTL10336MA, Marble  
Item #RTL10336PA, Patriotic  
Item #RTL10336SF, Spring

**Aluminum Folding Canes  
Handle Height Adjusts from 30"-37"**



Item #	Description
10304BF-1	Black Floral
RTL10304BW	Black/White Abstract
RTL10304BZ	Bronze
RTL10304DG	Dog
RTL10304GD	Garden
RTL10304PN	Pink Abstract

**\$5.99**  
EACH

**\$5.99**  
EACH



**Aluminum Folding Canes with Gel Grip,  
Handle Height Adjusts from 32"-36"**  
Item #RTL10370BC, Blue Crackle



**\$42<sup>81</sup>**  
CASE  
Sold 4/cs

**Quad Canes, Large Base**  
Item #10300-4



**\$847**  
EACH

**Folding Quad Cane, Small Base, Charcoal**  
Item #RTL10310FCH



AS LOW AS...  
**\$44<sup>49</sup>**  
CASE  
Sold 4/cs

**Bariatric Quad Canes**  
Item #10316-4, Small Base, \$44.49/cs  
Item #10317-4, Large Base, \$47.91/cs



AS LOW AS...  
**\$75<sup>86</sup>**  
CASE  
Sold 8/cs

**EZ Adjust Aluminum Crutches with Euro-Style Clip and Accessories**  
Item #10430-8, Adult, \$90.89/cs  
Item #10431-8, Youth, \$75.86/cs  
Item #10432-8, Tall, \$88.07/cs



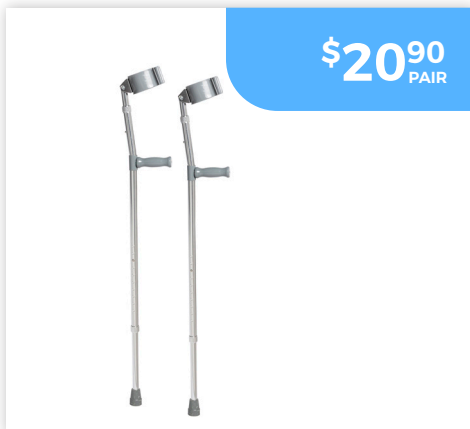
**\$1217**  
PAIR

**Retail Packaged Aluminum Crutches with Accessories**  
Item #RTL10402, Tall, Adult



**\$1544**  
PAIR

**Universal Aluminum Crutch with Accessories**  
Item #RTL10433



**\$2090**  
PAIR

**Steel Forearm Crutches**  
Item #10405, Tall Adult



**\$2530**  
EACH

**Bariatric Steel Forearm Crutch**  
Item #10403HD, Adult



**\$2912**  
PAIR

**Drive SUMMIT™ Walking Poles**  
Item #RTL10330MN

\$743  
EACH



Automatic Blood Pressure Monitor,  
Wrist Model

Item #BP2116

\$3231  
EACH



PURE EXPRESSIONS® Single Channel  
Electric Breast Pump

Item #RTLBP1000

\$5299  
EACH



PURE EXPRESSIONS® Dual Channel  
Electric Breast Pumps

Item #RTLBP2000

\$1709  
EACH



PURE EXPRESSIONS® Breast Pump  
Carry Bag

Item #BP001

\$1714  
EACH



PURE EXPRESSIONS® Insulated  
Cooler Bag

Item #BP002

\$244  
EACH



6oz Wide Neck Bottle with Cap

Item #BP004

\$1244  
EACH



HURRYCYCLE® Pedal Exerciser

Item #H19E008BK

\$2253  
EACH



Folding Pedal Exerciser with  
Electronic Display

Item #RTL10273

\$1221  
EACH



Heating Pad

Item #RTL19G007GR





**\$518**  
BOX  
Sold 2/box

**Adult Bib Scarf**

Item #RTL19D8BG-2, Blue & Gray  
Item #RTL19D8PK-2, Pink & Floral



**\$579**  
BOX  
Sold 2/box

**EASYSIP® Cup**

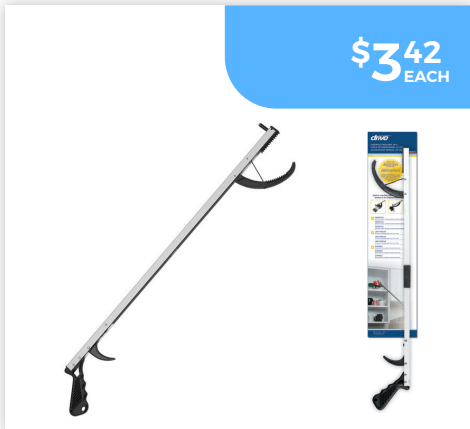
Item #RTL19K005-2



**\$597**  
EACH

**Molded Stocking Aid**

Item #RTL2010



**\$342**  
EACH

**26" Hand-Held Reacher**

Item #RTL5020



**\$1201**  
EACH

**Hip Kit**

Item #RTL9506



**\$1032**  
EACH

**Padded Swivel Seat Cushion**

Item #RTLAF-300



**\$581**  
EACH

**Sitz Bath**

Item #RTLPC23234

**OTTER® Bath Chair**

Contact Your Representative for Pricing Details



Item #	Description	UOM
OT-1000SF-BB	Small, Soft Fabric, Blue	1/ea
OT-1000SF-LL	Small, Soft Fabric, Lavender	1/ea
OT-2000SF-BB	Medium, Soft Fabric, Blue	1/ea
OT-2000SF-LL	Medium, Soft Fabric, Lavender	1/ea
OT-3000SF-BB	Large, Soft Fabric, Blue	1/ea
OT-3000SF-LL	Large, Soft Fabric, Lavender	1/ea
OT-4000SF-BB	Extra Large, Soft Fabric, Blue	1/ea
OT-4000SF-LL	Extra Large, Soft Fabric, Lavender	1/ea

\*Ask about our standard fabric options

## P POD® Postural Support System

Contact Your Representative for Pricing Details



Item #	Description	UOM
APP-2000S-DX	Small, Wipeable Dartex Red	1/ea
APP-2000S-MP	Small, Mermaid Pink	1/ea
APP-2000S-PB	Small, Pool Blue	1/ea
APP-3000M-DX	Medium, Dartex Red	1/ea
APP-3000M-MP	Medium, Mermaid Pink	1/ea
APP-3000M-PB	Medium, Pool Blue	1/ea
APP-4000L-DX	Large, Wipeable Dartex Red	1/ea
APP-4000L-JP	Large, Jellyfish Purple	1/ea
APP-4000L-MP	Large, Mermaid Pink	1/ea
APP-4000L-WB	Large, Whale Blue	1/ea
APP-5000L-DX	Extra Large, Wipeable Dartex Red	1/ea
APP-5000L-JP	Extra Large, Jellyfish Purple	1/ea
APP-5000L-MP	Extra Large, Mermaid Pink	1/ea
APP-5000L-WB	Extra Large, Whale Blue	1/ea

## TROTTER® Mobility Chair

Contact Your Representative for Pricing Details



\*Comes standard with under seat carrier and canopy

Item #	Description	UOM
TR-1200-FR	12", Red	1/ea
TR-1200-JB	12", Blue	1/ea
TR-1200-PP	12", Pink	1/ea
TR-1400-FR	14", Red	1/ea
TR-1400-JB	14", Blue	1/ea
TR-1400-PP	14", Pink	1/ea
TR-1600-FR	16", Red	1/ea
TR-1600-JB	16", Blue	1/ea
TR-1600-PP	16", Pink	1/ea
TR-1800-FR	18", Red	1/ea
TR-1800-JB	18", Blue	1/ea
TR-1800-PP	18", Pink	1/ea

## NIMBO™ Posterior Walker

Contact Your Representative for Pricing Details



\*Ask about our optional seating upgrade

Item #	Description	UOM
KA1200-2GCR	Extra Small, Castle Red	1/ea
KA1200-2GKB	Extra Small, Knight Blue	1/ea
KA1200-2GWP	Extra Small, Wizard Purple	1/ea
KA2200-2GCR	Small, Castle Red	1/ea
KA2200-2GKB	Small, Knight Blue	1/ea
KA2200-2GWP	Small, Wizard Purple	1/ea
KA3200-2GCR	Medium, Castle Red	1/ea
KA3200-2GKB	Medium, Knight Blue	1/ea
KA3200-2GWP	Medium, Wizard Purple	1/ea
KA4200-2GCR	Large, Castle Red	1/ea
KA4200-2GKB	Large, Knight Blue	1/ea
KA4200-2GWP	Large, Wizard Purple	1/ea
KA5200-2GEB	Extra Large, Emperor Black	1/ea





**[www.drivemedical.com](http://www.drivemedical.com) | 877.224.0946**

©2024 Medical Depot, Inc. dba Drive DeVilbiss Healthcare, 99 Seaview Boulevard, Port Washington, NY 11050. All trademarks used in association with the sale of products of Drive DeVilbiss are trademarks owned by Medical Depot, Inc. All other trademarks, trade names, service marks and logos referenced herein belong to their respective companies.